

# Rodenr: Sk01

Antall  
boenheter

- 1
- 2
- 3-10



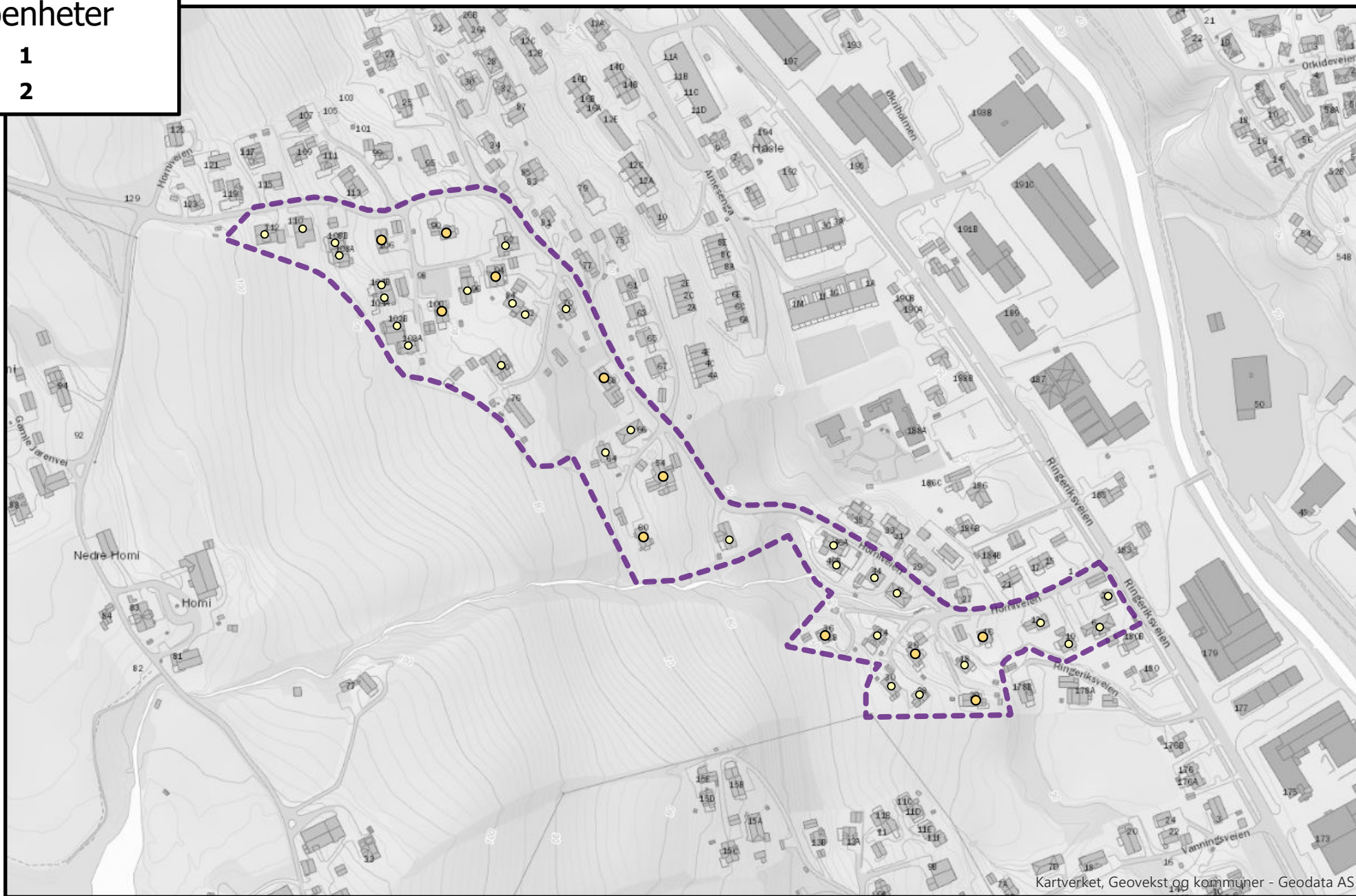
Antall boenheter i roden: 52

# Rodenr: Sk02

Antall  
boenheter

○ 1

● 2



Kartverket, Geovekst og kommuner - Geodata AS

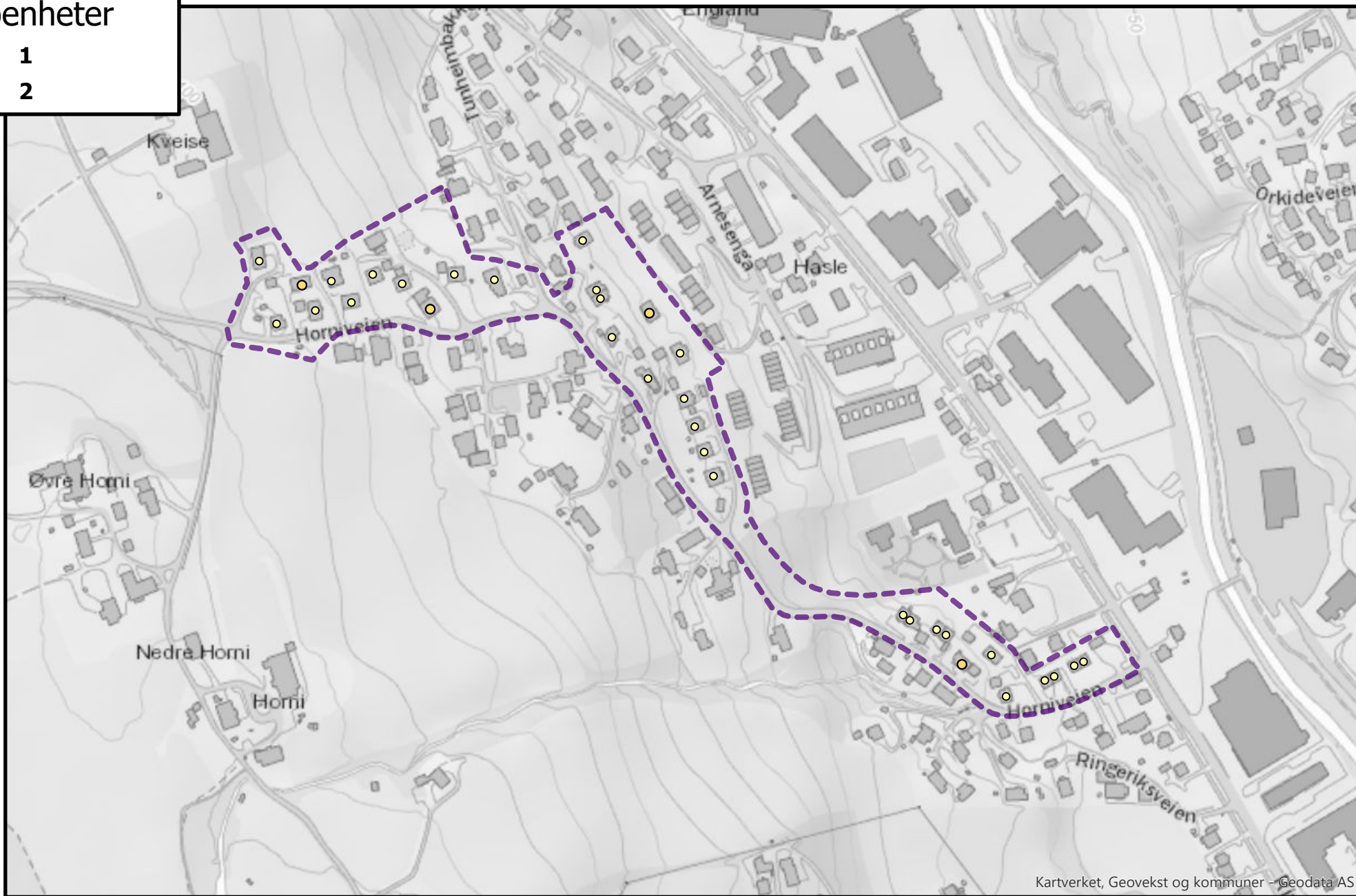
Antall boenheter i roden: 51

# Rodenr: Sk03

Antall  
boenheter

○ 1

● 2



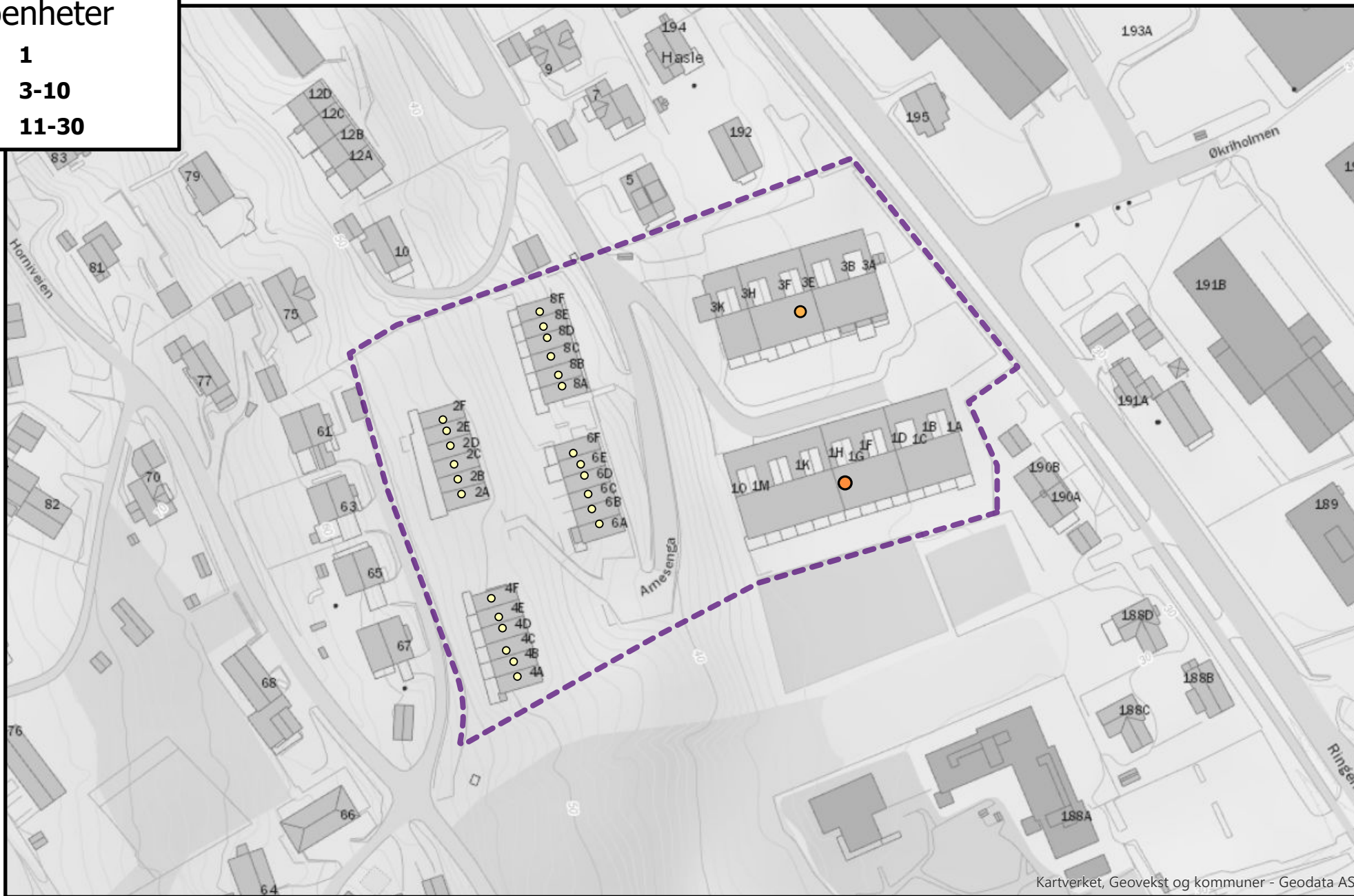
Kartverket, Geovekst og kommuner - Geodata AS

Antall boenheter i roden: 37

# Rodenr: Sk04

Antall  
boenheter

- 1
- 3-10
- 11-30



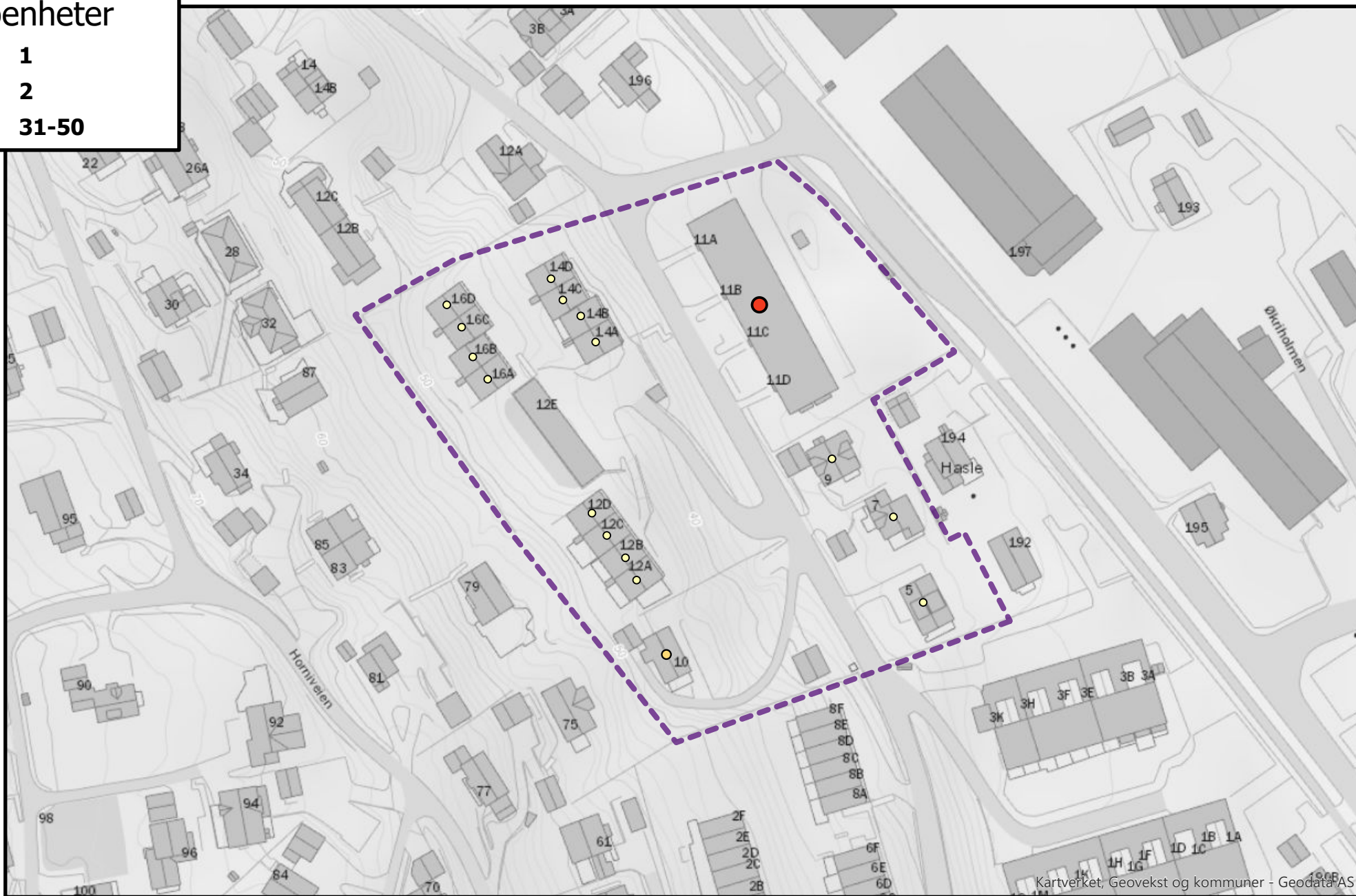
Kartverket, Geovekst og kommuner - Geodata AS

Antall boenheter i roden: 48

# Rodenr: Sk05

Antall  
boenheter

- 1
- 2
- 31-50

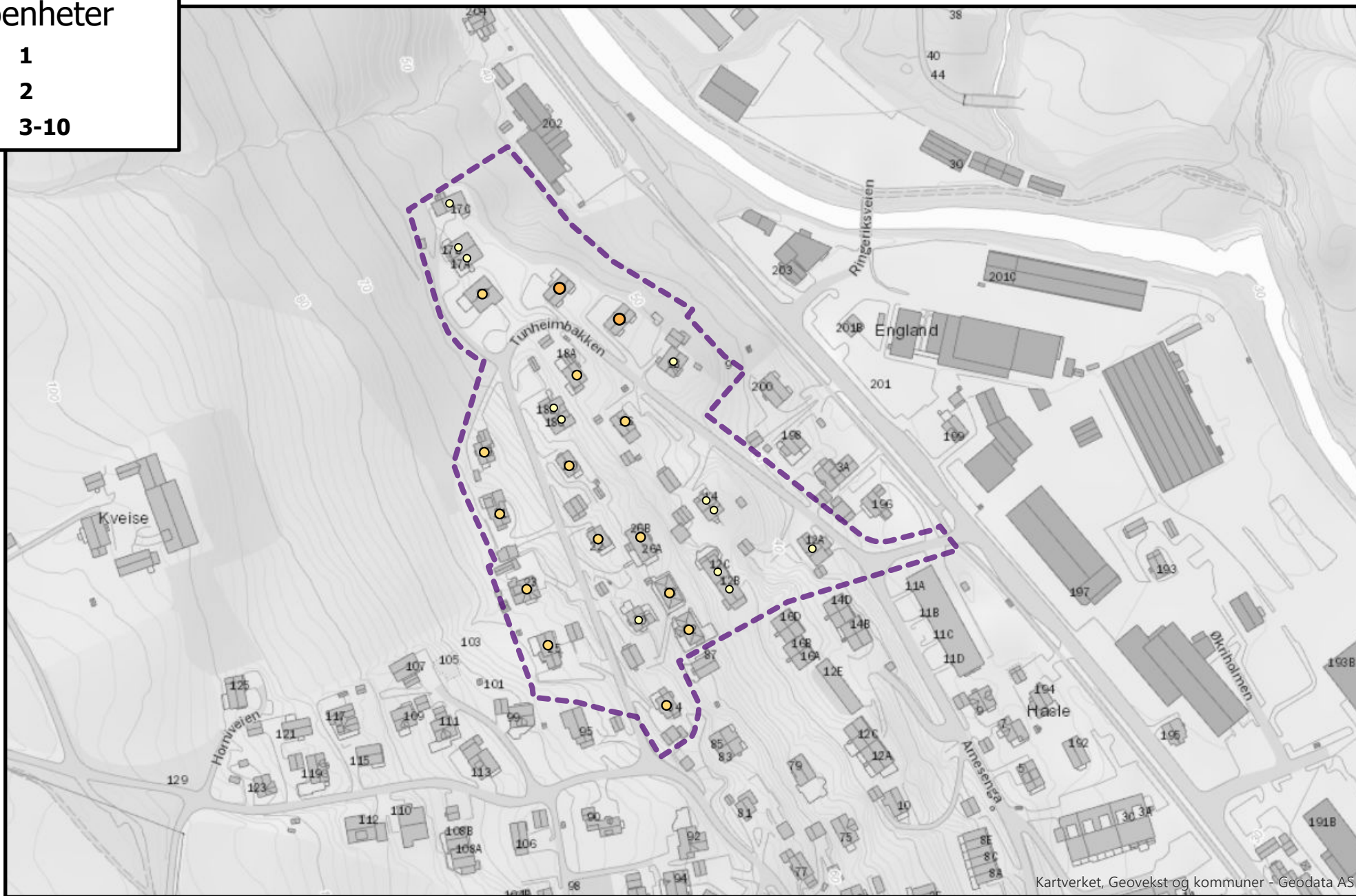


Antall boenheter i roden: 65

# Rodenr: Sk06

Antall  
boenheter

- 1
- 2
- 3-10



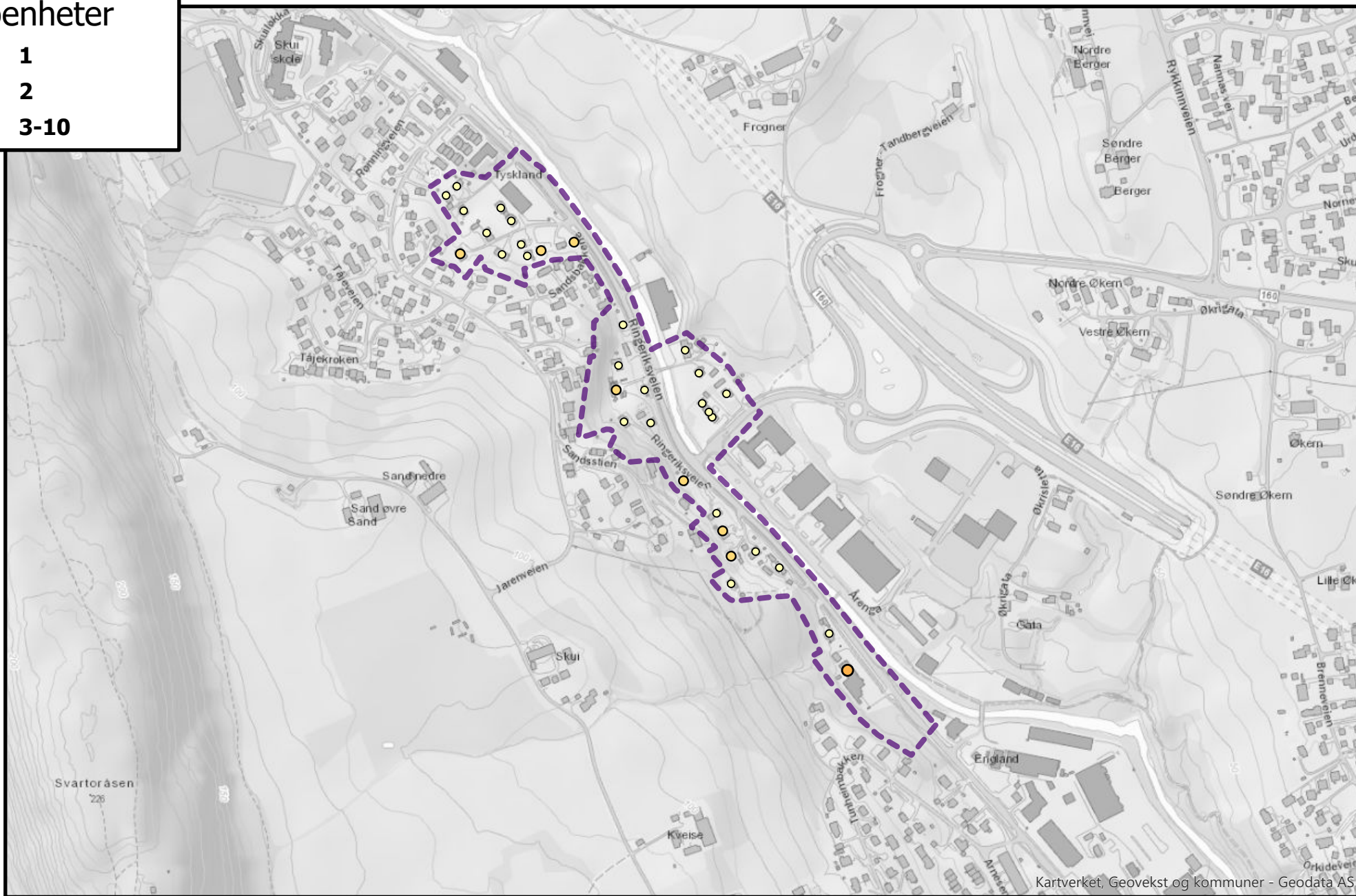
Kartverket, Geovekst og kommuner - Geodata AS

Antall boenheter i roden: 46

# Rodenr: Sk07

Antall  
boenheter

- 1
- 2
- 3-10

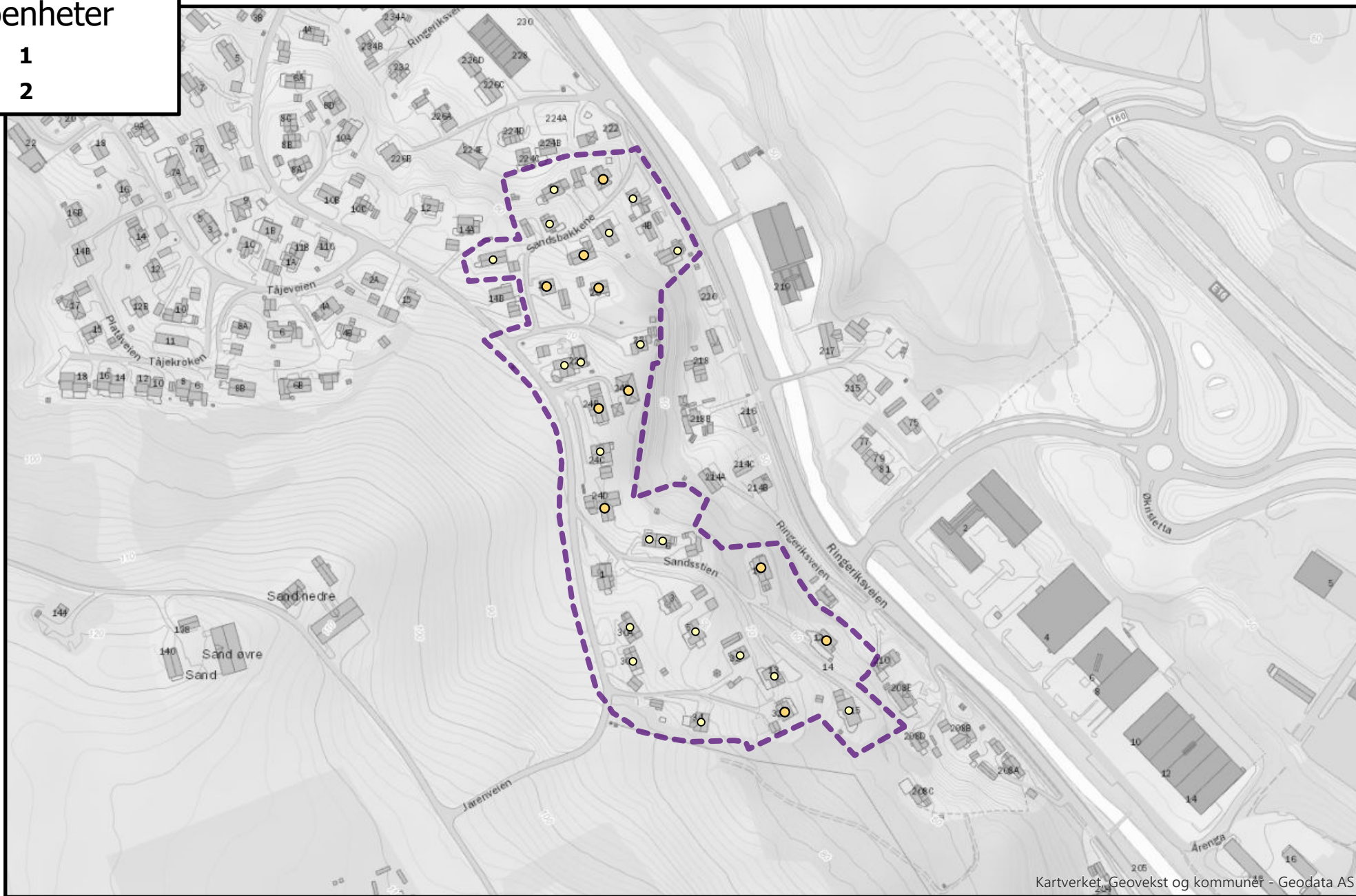


Antall boenheter i roden: 43

# Rodenr: Sk08

Antall  
boenheter

- 1
- 2



Kartverket, Geovekst og kommuner - Geodata AS

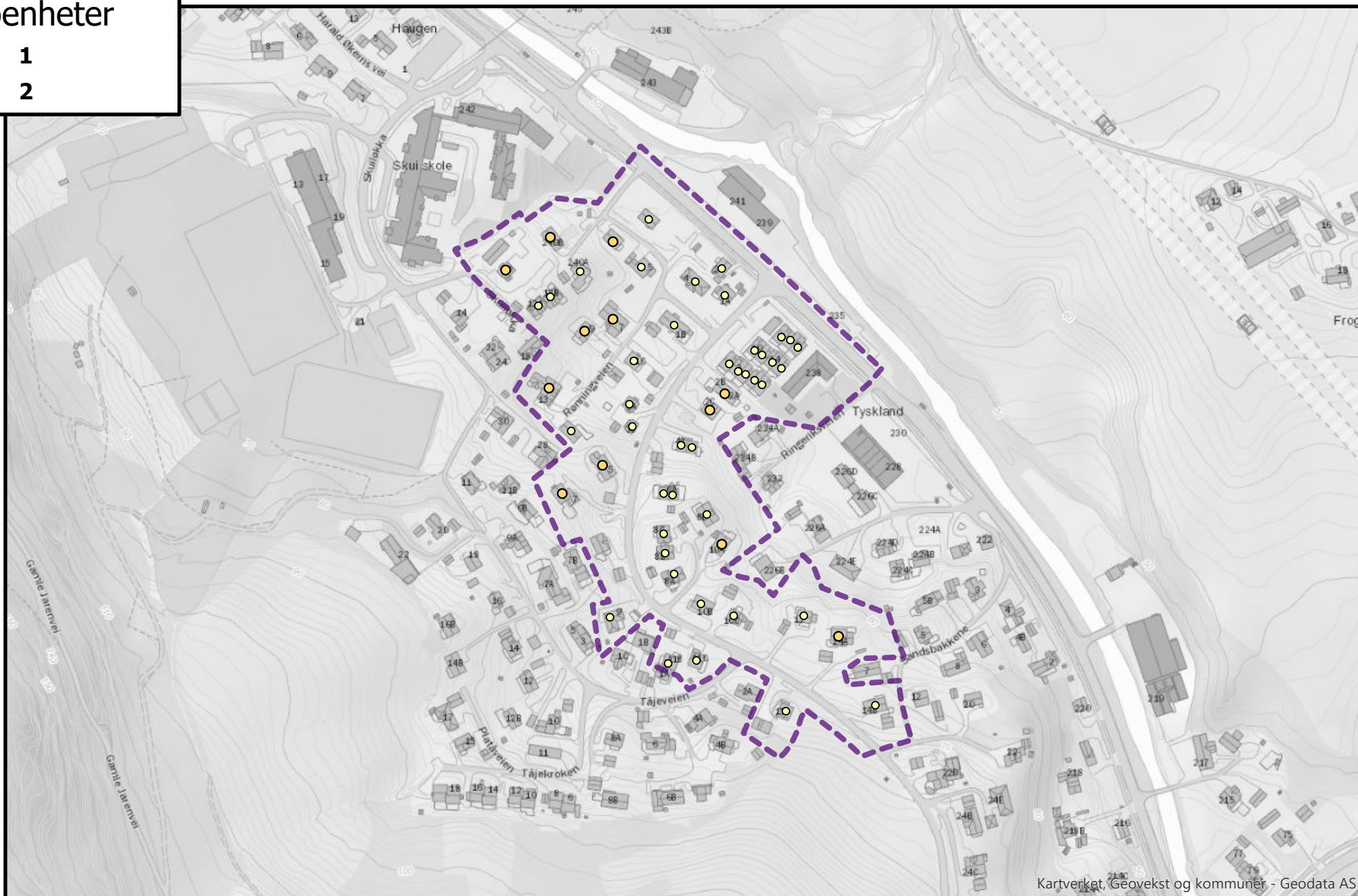
Antall boenheter i roden: 39



# Rodenr: Sk09

Antall  
boenheter

- 1
- 2



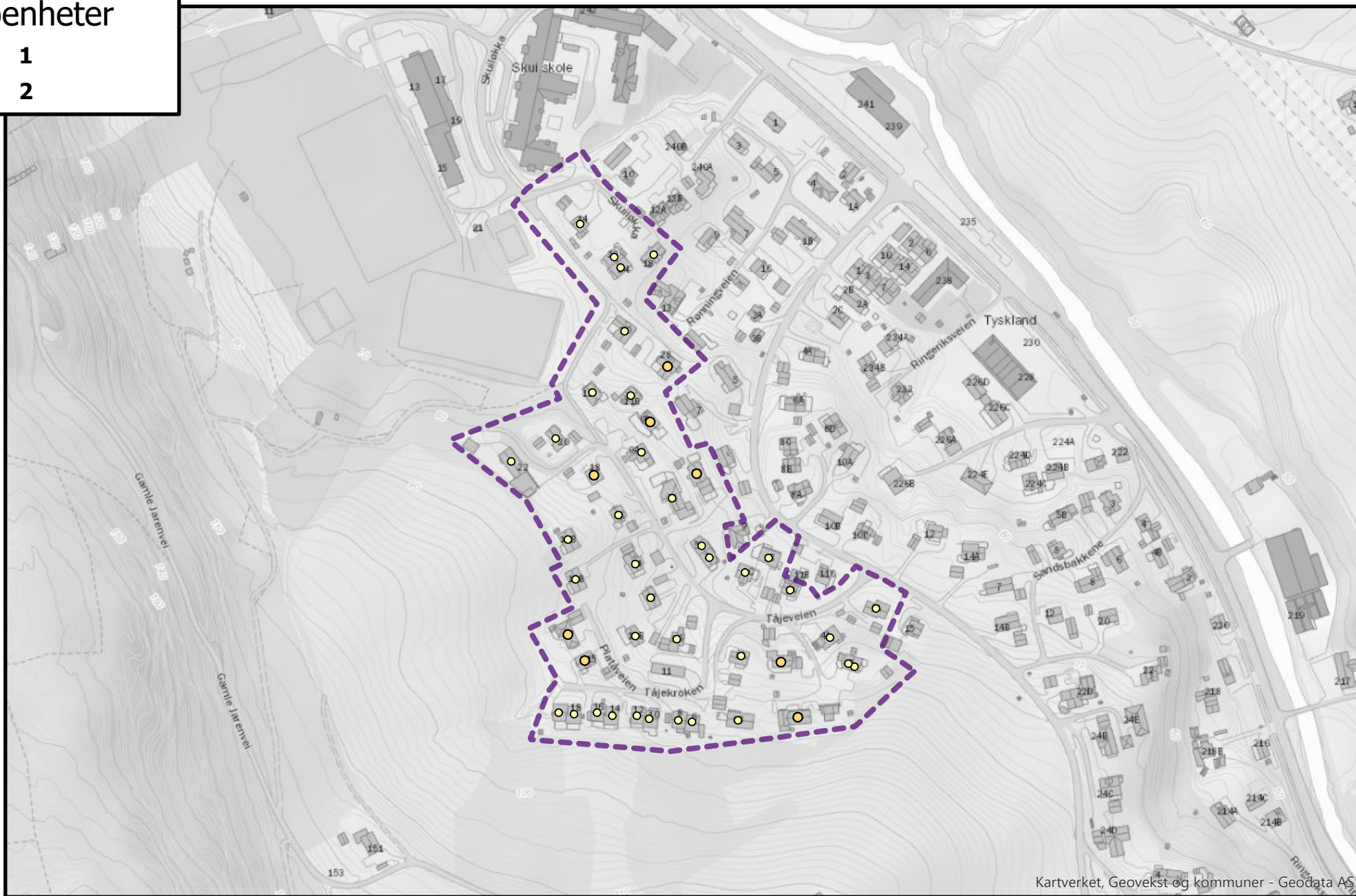
Kartverket, Geovekst og kommuner - Geodata AS

Antall boenheter i roden: 65

# Rodenr: Sk10

Antall  
boenheter

- 1
- 2



Kartverket, Geovekst og kommuner - Geodata AS

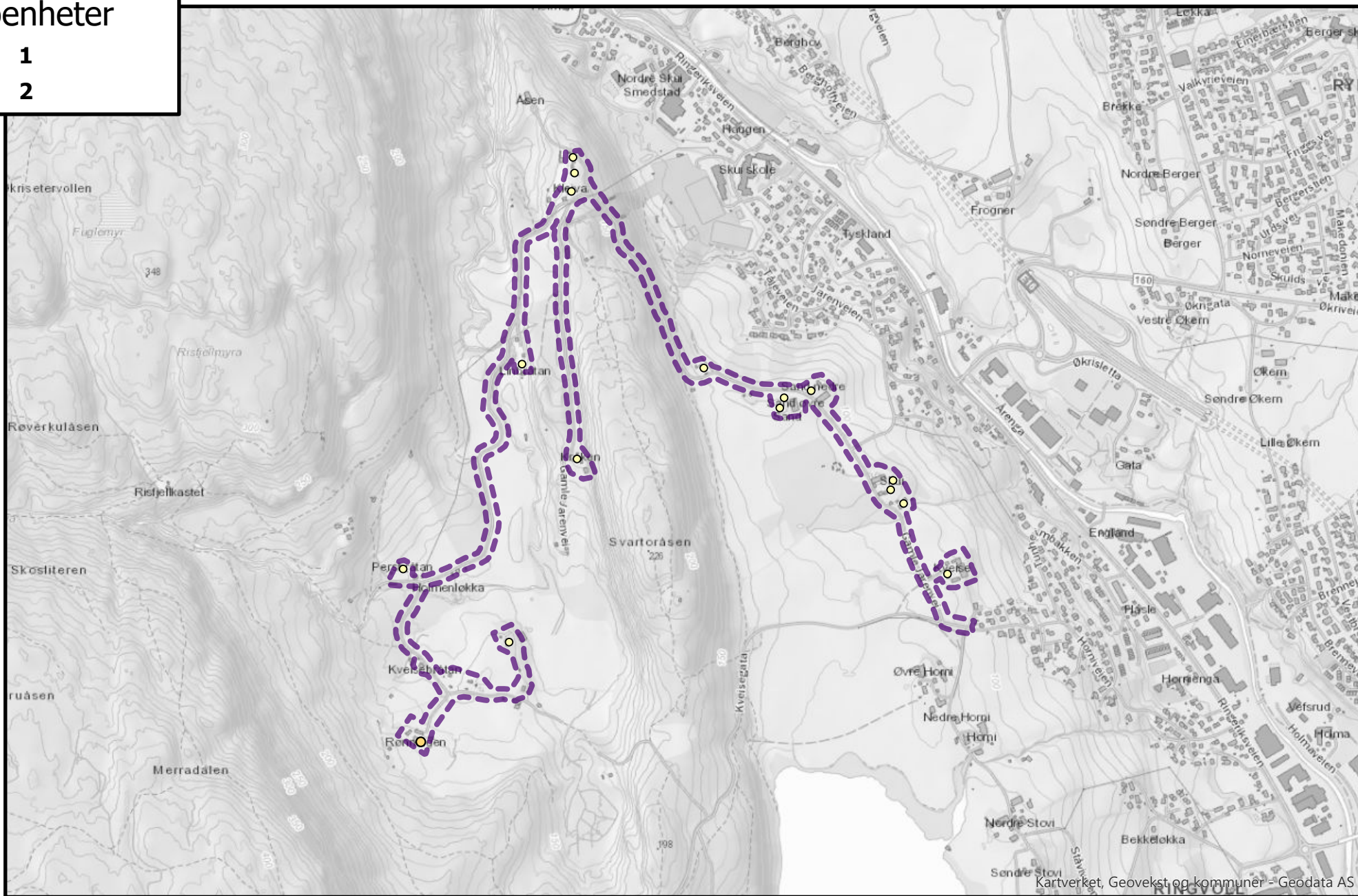
Antall boenheter i roden: 53

# Rodenr: Sk11

Antall  
boenheter

○ 1

● 2



Kartverket, Geovekst og kommuner - Geodata AS

Antall boenheter i roden: 17

# Rodenr: Sk12

Antall  
boenheter

○ 1

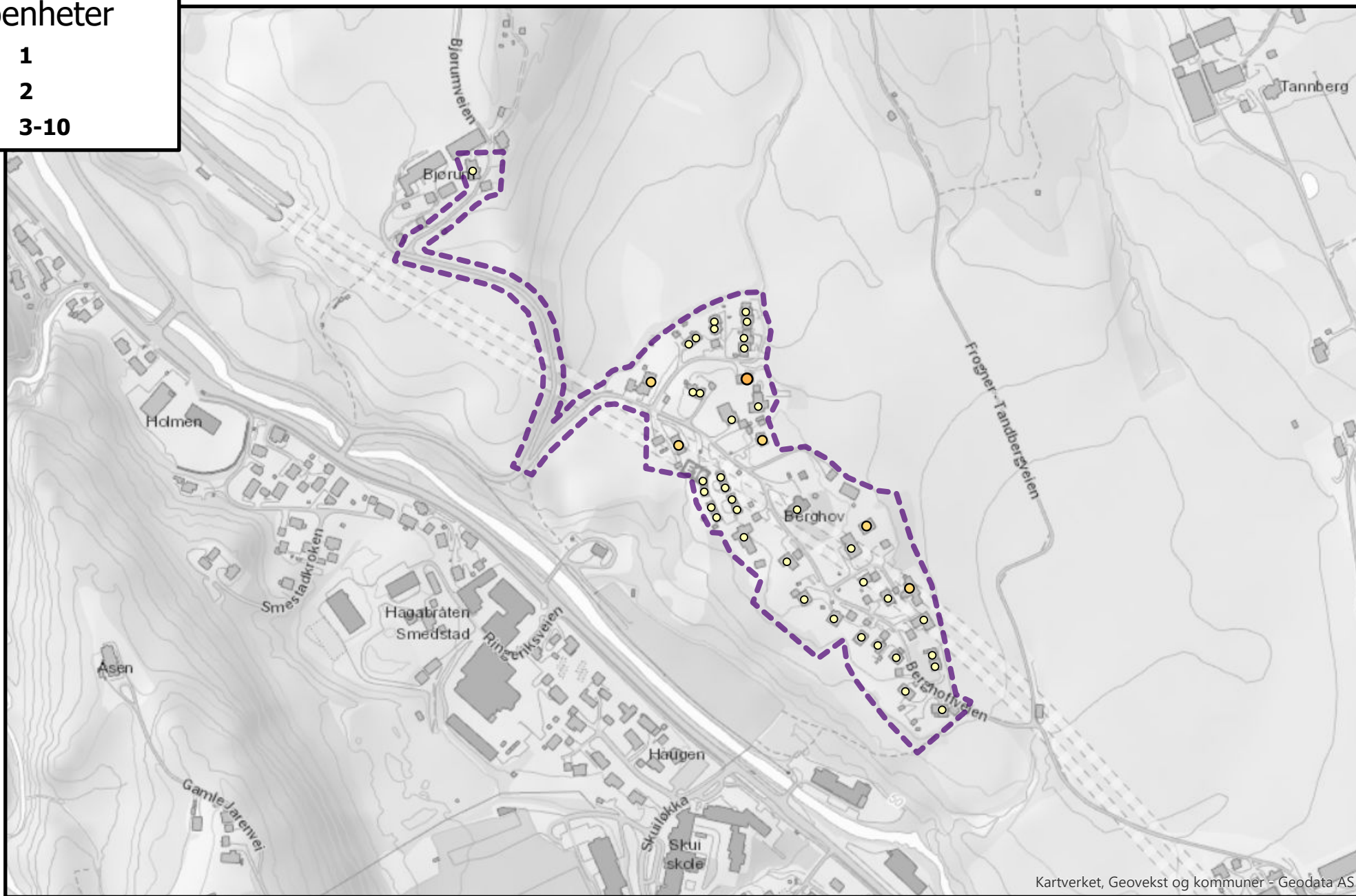


Antall boenheter i roden: 11

# Rodenr: Sk13

Antall  
boenheter

- 1
- 2
- 3-10



Kartverket, Geovekst og kommuner - Geodata AS

Antall boenheter i roden: 50

# Rodenr: Sk14

Antall  
boenheter

○ 1

● 2



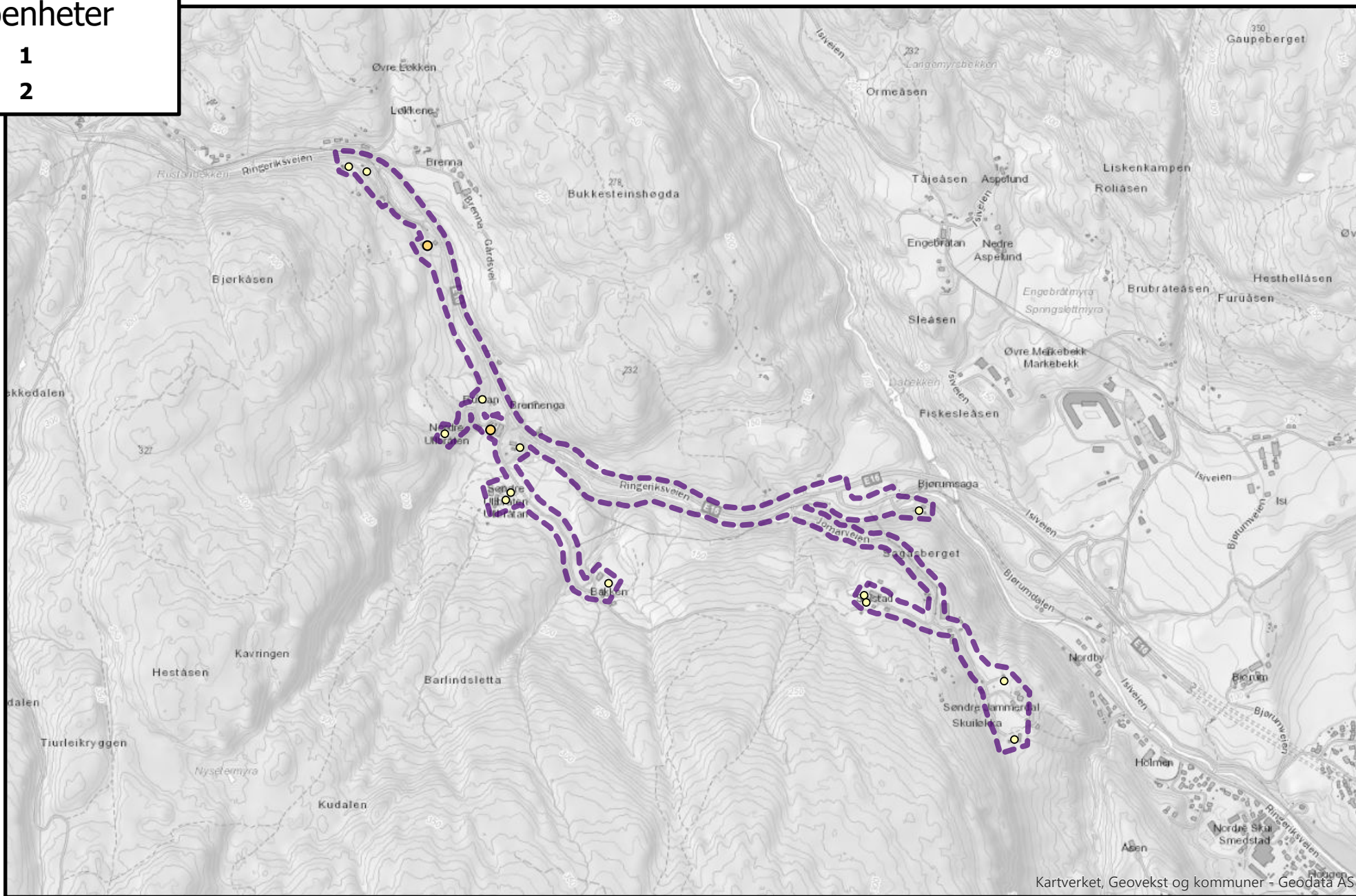
Antall boenheter i roden: 58

# Rodenr: Sk15

Antall  
boenheter

○ 1

● 2



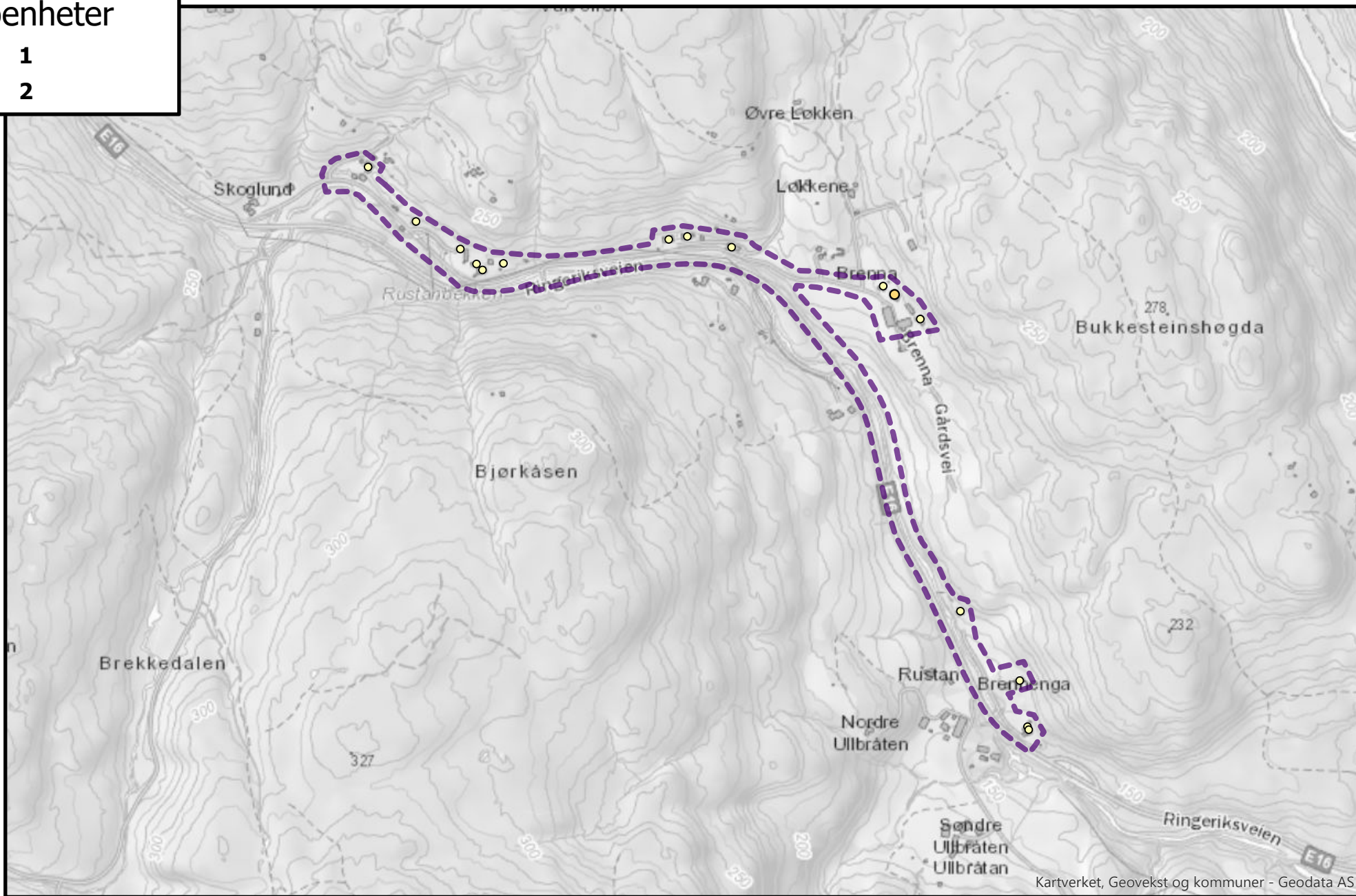
Kartverket, Geovekst og kommuner - Geodata AS

Antall boenheter i roden: 17

# Rodenr: Sk16

Antall  
boenheter

- 1
- 2



Kartverket, Geovekst og kommuner - Geodata AS

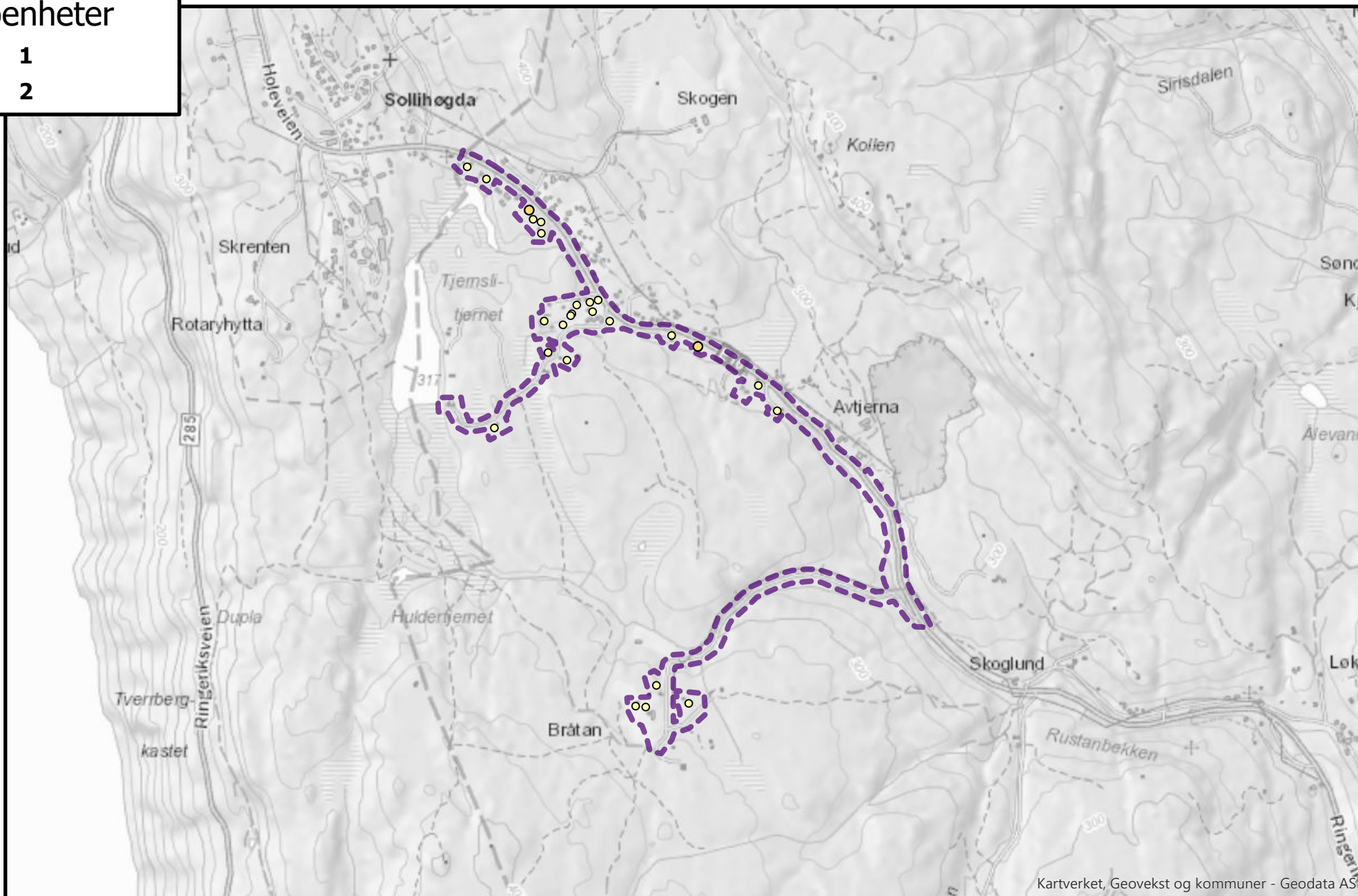
Antall boenheter i roden: 17



# Rodenr: Sk17

Antall  
boenheter

- 1
- 2

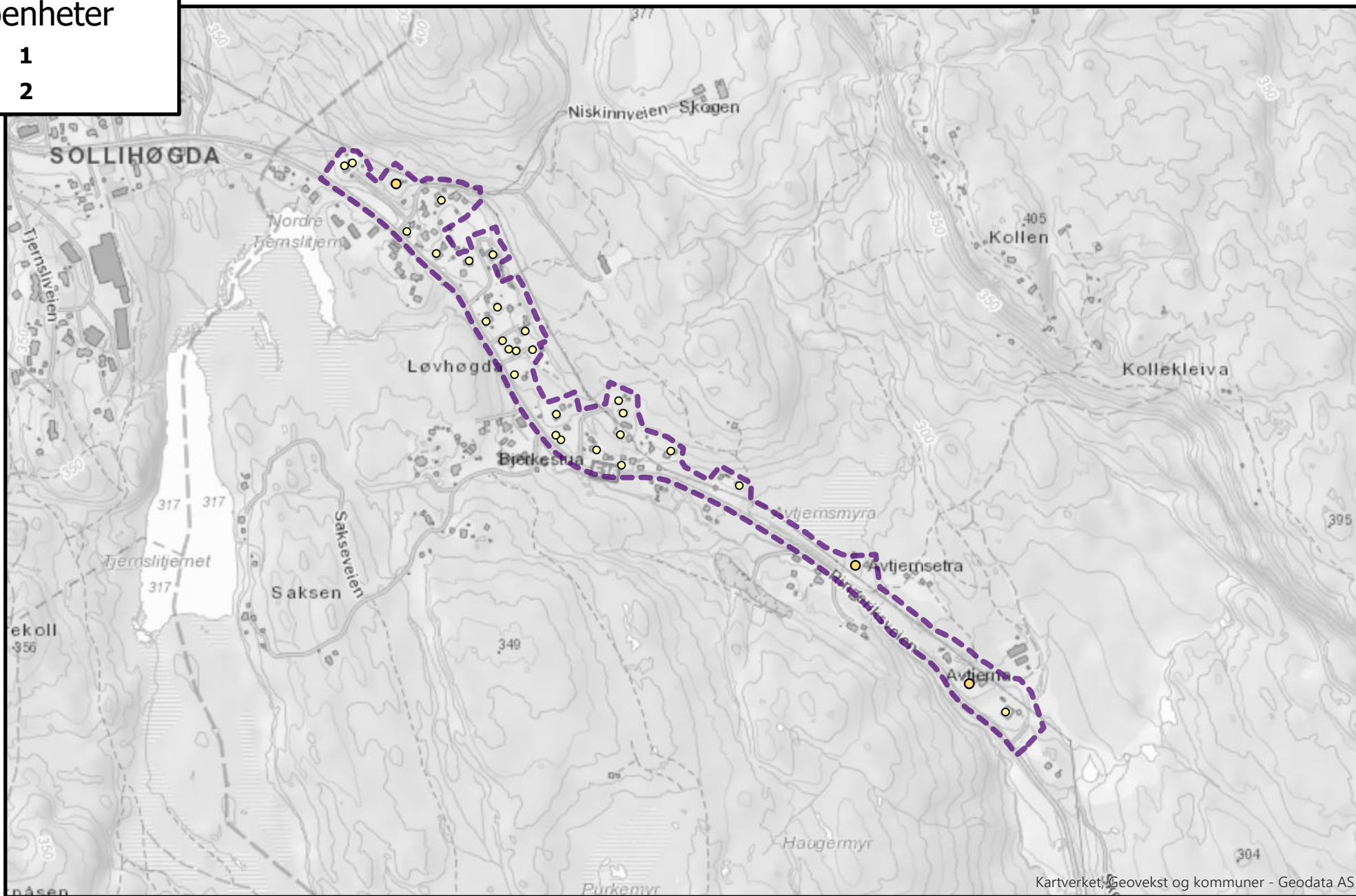


Antall boenheter i roden: 28

# Rodenr: Sk18

Antall  
boenheter

- 1
- 2



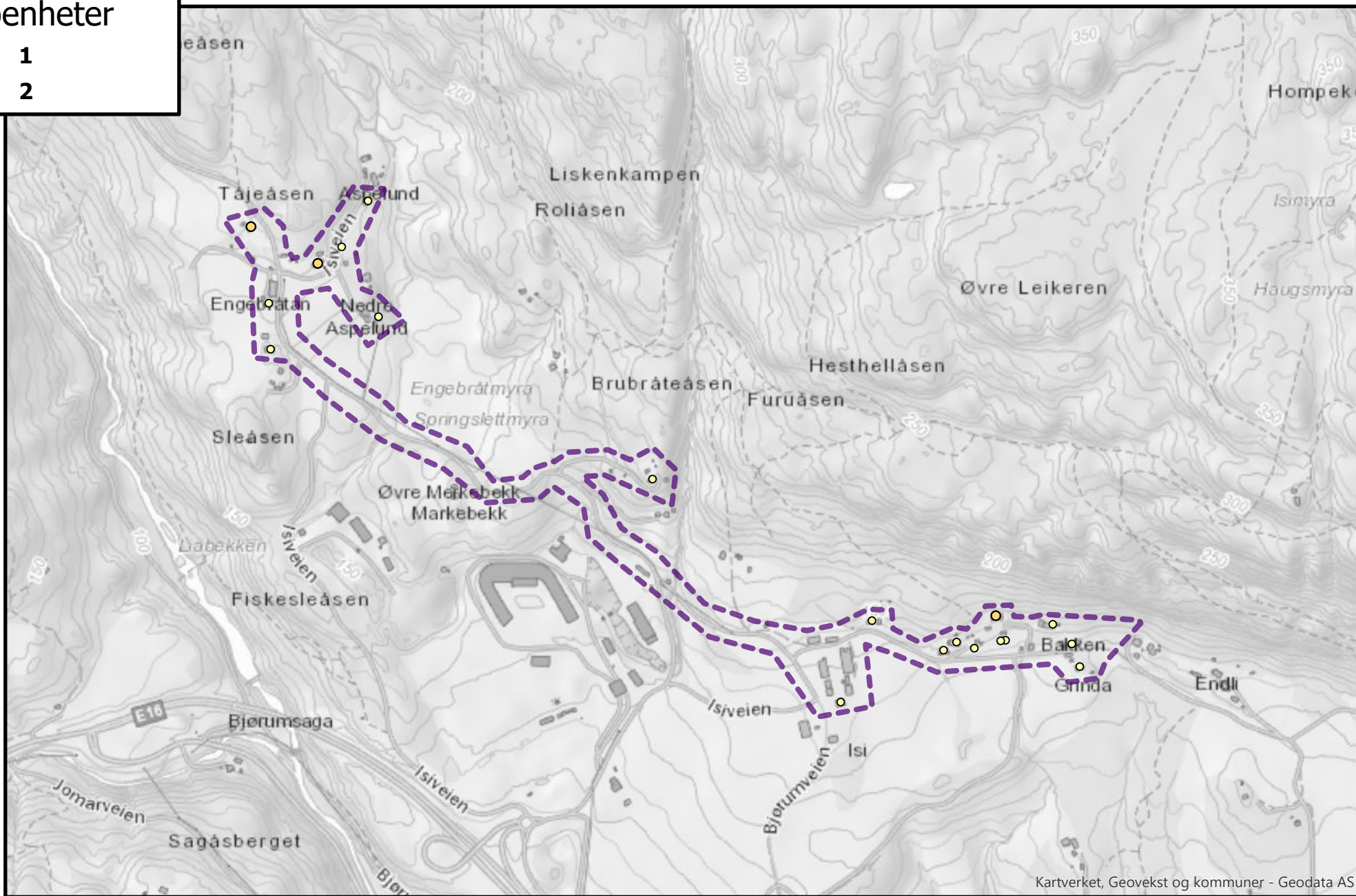
Antall boenheter i roden: 32

# Rodenr: Sk19

Antall  
boenheter

○ 1

● 2



Kartverket, Geovekst og kommuner - Geodata AS

Antall boenheter i roden: 22